



ROYAL GROUP
TRUST CO.

Beyond Creativity
Stylish, Elegant, Innovation



JOIN US
@TRUST.HOMEPS

Index

2

Cooking Appliances

- Stand Mixers	3
- Hand Mixers	5
- Hand Blenders	6
- Food Processors	7
- Food Scales	8
- Air Fryers	9
- Induction Cookers	10
- Deep Fryer	11
- Grill Toasters	12
- Microwaves	16
- Electric Ovens	18

20

Coffee & Beverages

- Coffee Machines	21
- Coffee Grinders	23
- Blenders	24
- Juicers	28
- Juice Extractors	30
- Water Kettles	32
- Water Dispenser	38

40

Personal Care

- Weight Scale	41
- Hair Stylers	42

46

Home Care

- Steam Irons	47
- Vacuum Cleaners	50

54

Comfort

- Electrical Heaters	55
- Tube Heaters & Stands	58
- Carbon Heaters	60
- Convection Heaters	61
- Electric Heaters	62
- Water Heater	63
- Gas Heaters	64
- Blanket Heaters	66
- Electrical Fans	68
- Insects Killer	72

A line drawing of a modern kitchen. In the foreground, a large rectangular island with a thick countertop is shown. Two wooden stools with tufted seats are tucked under the island. In the background, there are kitchen cabinets, a refrigerator with a water dispenser, a microwave, a stove, and a sink with a faucet. A track with three pendant lights hangs above the island. Two windows are visible on the right wall. The entire drawing is in white lines on a solid red background.

Cooking Appliances

— STAND MIXERS



Stand Mixer

210-16171[®]

- Mix, Beat, Whisk, Knead.
- Bowl cover.
- Cover, Spatula.
- Stainless steel bowl with hook.
- Capacity 12L.
- Voltage: 220-240V~50Hz.



2000W



S.S



12 Liter



Stand Mixer

87-3820

- Mix, Beat, Whisk, Knead.
- Bowl cover.
- Silver color.
- Stainless steel bowl with hook.
- Capacity 8.5L.
- Voltage: 230V~, 50Hz.



1500W



S.S



8.5 Liter



Stand Mixer

87-3810[®]

- Mix, Beat, Whisk, Knead.
- Bowl cover.
- Red color.
- Stainless steel bowl with hook.
- Capacity 6.5L.
- Voltage: 230V~, 50Hz.



1300W



S.S



6.5 Liter



— STAND MIXERS



Stand Mixer

210-16132

- Mix, Beat, Whisk, Knead.
- Bowl cover.
- Black color.
- Stainless steel bowl with hook.
- Capacity 6.5L.
- Voltage: 230V~, 50Hz.



1300W



S.S



6.5 Liter



Stand Mixer

210-16112

- Whisk, Beater.
- Spatula.
- Bowl cover.
- Stainless steel bowl with hook.
- 240-220V~60/50Hz, 1300W.
- Capacity: 5 Liter.



1300W



S.S



5 Liter



**FLAWLESS
MIXING,**
BEATING AND WHIPPING!



— HAND MIXERS



Hand Mixer

210-15100

- 5 Speed with eject
- ABS inner housing decorated.
- One set A3 Iron plating beater & doughhook.
- 1 Set beater & dough hooks.
- 240-220V~50Hz, 100W.



100W



5 Speeds



Multi heads



Hand Mixer

210-15110[®]

- ABS inner housing decorated.
- 430 Stainless steel housing.
- 1 Set beater & dough hooks.
- Easy for use & safe.
- 240-220V~60/50Hz, 250W.



250W



5 Speeds



S.S

**LIGHT
& POWERFUL**



— HAND BLENDERS



Hand Blender (Set) 210-10320[®]

- Adjustable running speed control.
- 2 Speed with soft-touch switch.
- Stainless steel.
- 1 Liter beaker.
- 0.6 Liter Chopper.
- 240-220V~60/50Hz, 450W.



Hand Blender 210-10130[®]

- 2 Speed with soft-touch switch.
- Stainless steel.
- Easy for use.
- Detachable stainless steel horn rod.
- 240-220V~60/50Hz, 1200W



**HIGH
QUALITY
& DURABLE**



— FOOD PROCESSORS



Multifunction Food Processor

210-06610

- Black injection belt decoration.
- Plastic dry grinder.
- 3 pcs cutting paltes.
- 2.0 air volume bowl.
- Double safety switch in bowl cover and base.
- Voltage: 550w-240-220v~ 60/50hz.



550W



2 Speeds



1.5 Liter



Meat Grinder

210-05110

- Big stainless steel housing.
- On/off/reverse function.
- Black color.
- Metal gears.
- Aluminum gear box and 12 head.
- Voltage: 240-220v~ 60-50hz 600w.



600W



33 housing



3 Metal cutting



Food Chopper

87-3620

- 2 Layer blades.
- Metal coupler.
- Metal head shaft.
- Garlic accessories.
- Stainless steel head housing.
- Voltage: 230V~AC, 50Hz.



300W



2 Speeds



2 Liter

— FOOD SCALE

Digital Kitchen Scale

255-05110[®]



- High precision strain gauge sensors system.
- ABS plastic material.
- Big LCD display: 58X26mm.
- Auto zero-Auto off.
- Over load & Low battery indication.
- Max weight : 10KG.



Digital

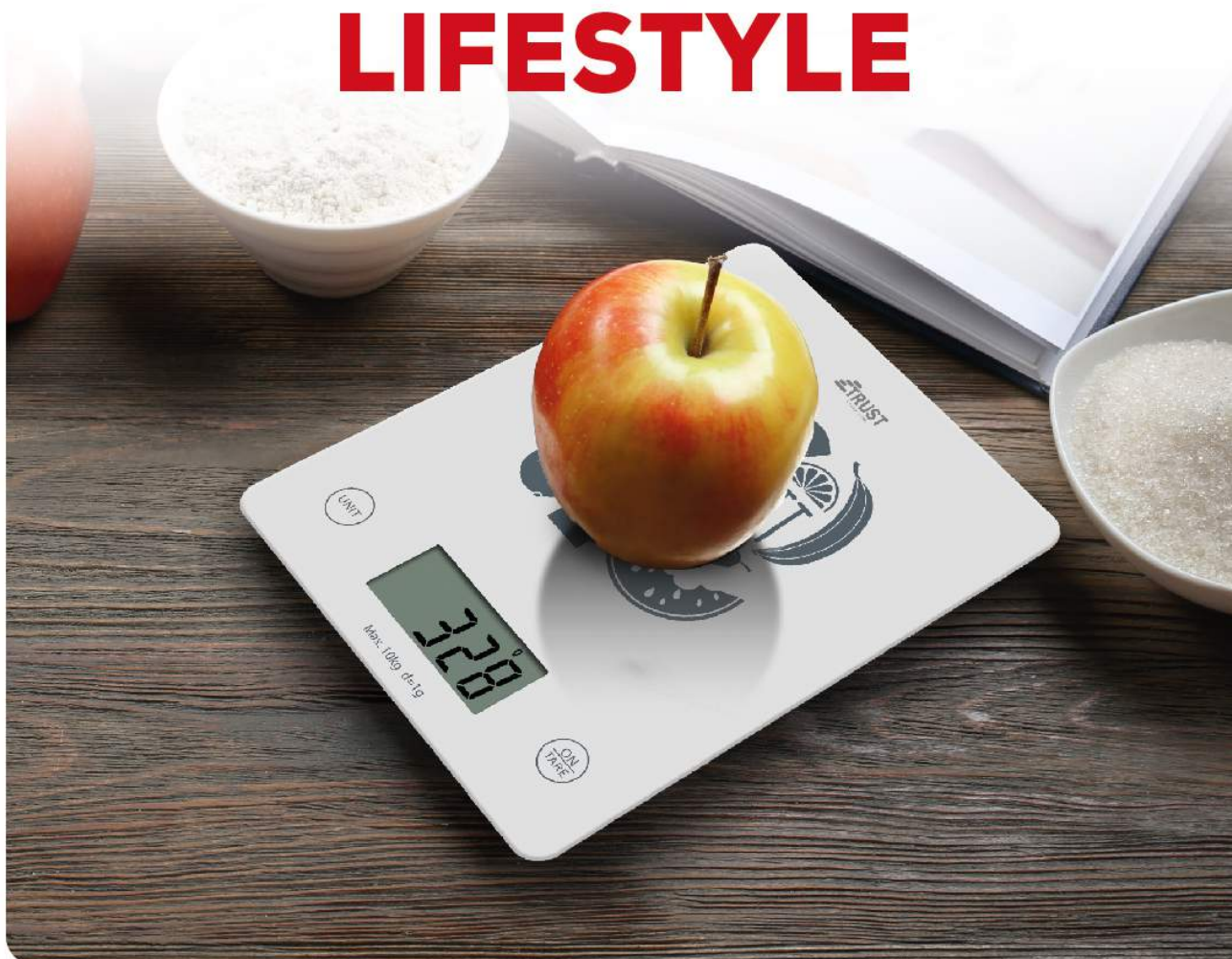


Capacity
10KG



LCD
Display

FOR HEALTHY LIFESTYLE



— AIR FRYERS



Air Fryer

210-02230[®]

- Capacity: 3L basket / 4L drawer.
- Plastic body with stainless steel decoration.
- Detachable no stick drawer.
- LED display, touch panel.
- Over heat production.
- 240-220V~60/50Hz, 1300W.



1300W



80-200°C



4 Liters



Air Fryer

87-2220[®]

- Plastic body with chromed.
- Decoration, LED display, Touch panel.
- Adjustable temprature 200-80°C degrees.
- Removable non-stick basket.
- Voltage: 230V ~, 50Hz.



1800W



200°C



6 Liters

HEALTHY
WITHOUT
SACRIFICING TASTE



— INDUCTION COOKERS



Ceramic Cooker 210-02920[®]

- With infrared heating element.
- With strong anti-pressure crystallite glass plate.
- Heating fast and efficiently.
- Auto-thermostat, temperature control.
- 230V 60/50Hz, 2000W.



Ceramic Cooker 210-02930[®]

- With infrared heating element.
- With strong anti-pressure crystallite glass plate.
- Heating fast and efficiently.
- Auto-thermostat, temperature control.
- 230V 60/50Hz, 2800W.



FAR INFRARED CONCENTRATION HEATING



— DEEP FRYERS



Deep Fryer

210-02310[®]

- Anti grease filter.
- Polished stainless steel housing.
- Stainless steel lid with viewing windows.
- Adjust temperature between 150C-190C.
- Power and heating indicator light.
- 240-220V 60/50Hz 2000W.



2000W



Stainless Steel Housing



3.5 Liters



Deep Fryer Double

210-02320[®]

- Anti grease filter.
- Polished stainless steel housing.
- Stainless steel lid with viewing windows.
- Adjust temperature between 150C-190C.
- Power and heating indicator light.
- 240-220V 60/50Hz 2000W.



2000W



3 Basket



5 Liters

Fast Frying & Heat Up



— GRILL TOASTERS



Toaster

210-02710

- 3 Level temperature button.
- Lid lock property.
- Oil dripping channel.
- Easily keep in vertical position.
- Grill size: 23*31cm.
- Voltage: 240-220V, 60/50Hz.



Made in
Turkey



Toaster

210-02711

- 3 Level temperature button.
- Lid lock property.
- Oil dripping channel.
- Easily keep in vertical position.
- Grill size: 23*31cm.
- Voltage: 240-220V, 60/50Hz.



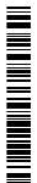
Made in
Turkey



Toaster

210-02720

- Removable non-stick cooking plates.
- Comfort cool-touch handle.
- Oil dripping channel.
- Easily keep in vertical position.
- Grill size: 24*35cm.
- Voltage: 240-220V, 60/50Hz.



Made in
Turkey

— GRILL TOASTERS



Toaster

210-02722[®]

- Removable non-stick cooking plates.
- Comfort cool-touch handle.
- Oil dripping channel.
- Easily keep in vertical position.
- Grill size: 24*35cm.
- Voltage: 240-220V, 60/50Hz.



1800W



Removable
Plates



3 Level



Made in
Turkey

FOR ALL LEVELS OF
COOKING



— GRILL TOASTERS



Toaster Medium size

87-2320

- Light indicator to signal the grill is on.
- Non-stick teflon coated plates.
- Double sided grilling.
- Easy for clean Palets.
- Grill size: 28x23cm.
- Voltage: 240-220V, 60/50Hz.



Toaster Big size

87-2330

- Light indicator to signal the grill is on.
- Non - stick teflon coated plates.
- Double sided grill open 180° flat.
- Easy for clean Palets.
- Grill size: 31x24cm.
- Voltage: 240-220V, 60/50Hz.



**FOR PERFECT
RESULTS**



Flavor begins with the Toaster

THAT YOU TRUST.



MICROWAVES



25L Digital Microwave

210-03331

- Cooking completion signal.
- 270mm Turntable glass tray.
- 60 Minutes timer.
- Defrost mode.
- Elegant model.
- Voltage: 900W, 230V ~, 50Hz.



25L Digital Microwave

210-03332

- Cooking completion signal.
- 270mm Turntable glass tray.
- 60 Minutes timer.
- Defrost mode.
- Elegant model.
- Voltage: 900W, 230V ~, 50Hz.



20L Digital Microwave

210-03321[®]

- Stainless steel.
- Defrost mode.
- Cooking completion signal.
- 250mm Turntable glass tray.
- Elegant model.
- Voltage: 230V ~, 50Hz. 700W.



MICROWAVES



20L Digital Microwave

210-03322*

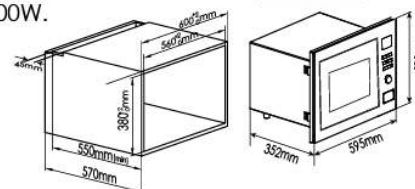
- Stainless steel.
- Defrost mode.
- Cooking completion signal.
- 250mm Turntable glass tray.
- Elegant model.
- Voltage: 230V ~, 50Hz. 700W.H



Built-in Digital

210-03531

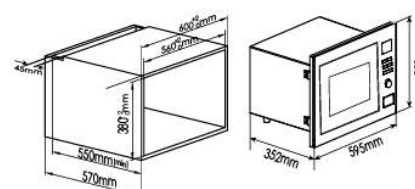
- Cooking End signal.
- 270mm Turntable glass tray.
- 5 Power level.
- 60 Minutes timer.
- Defrost mode.
- Voltage: 230V ~, 50Hz, 900W.



Built-in Digital

210-03532

- Cooking End signal.
- 270mm Turntable glass tray.
- 5 Power level.
- 60 Minutes timer.
- Defrost mode.
- Voltage: 230V ~, 50Hz, 900W.



— ELECTRIC OVEN



Electric Oven

210-04060*

- Big Square Tray.
- Mechanical Timer.
- Double Glass Door.
- Circular Deep Tray.
- Turbo Fan.
- Oven Lamp.



1800W



70 Liter



2 Double Glass Door



SCAN TO
WATCH VIDEO



Made in
Turkey



Electric Oven

210-04011*

- Big Square Tray.
- Mechanical Timer.
- Double Glass Door.
- Circular Deep Tray.
- Turbo Fan.
- Oven Lamp.



1400W



45 Liter



2 Double Glass Door



SCAN TO
WATCH VIDEO



Made in
Turkey



Electric Oven

210-04010*

- Big Square Tray.
- Mechanical Timer.
- Double Glass Door.
- Circular Deep Tray.
- Turbo Fan.
- Oven Lamp.



1400W



45 Liter



2 Double Glass Door



SCAN TO
WATCH VIDEO



Made in
Turkey

— ELECTRIC OVEN



Electric Oven

210-04110*

- Adjustable temperature control.
- 4 stages selector for different functions.
- 60 min timer with bell ring.
- Large capacity.
- Easy for use.
- Voltage: 240-220V~60/50HZ.



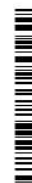
2200W



70 Liter



Turbo



Electric Oven

210-04111*

- Adjustable temperature control.
- 4 stages selector for different functions.
- 60 min timer with bell ring.
- Large capacity.
- Easy for use.
- Voltage: 240-220V~60/50HZ.



2200W



70 Liter



Turbo



For perfect
Results





Coffee & Beverages

— COFFEE MACHINES



Coffee Maker

210-09120[®]

- Removable funnel.
- Keep warm function.
- Optimal permanent nylon filter.
- Voltage: 240-220V~, 60/50Hz, 1000W.



Coffee Maker

87-3710[®]

- Removable funnel.
- Keep warm function.
- Optimal permanent nylon filter.
- Extra 10 filter.
- Voltage: 240-220V~, 50Hz.



Capsule Machine

87-3730[®]

- Nespresso capsules.
- Instant Ready in 40S.
- Coffee temperature up to 84-72°C.
- Voltage: 240-220V~, 50Hz.



— COFFEE MACHINES



Capsule Machine 210-09240

- PCD control panel.
- Coffee temperature up to 84-72°C.
- Heat efficiency.
- Frothing milk.
- 240-220V~60/50Hz..



Espresso Machine 87-3720

- Compatible with ground coffee.
- Coffee grinder.
- Function: Espresso/Capuccino/ Hot water.
- Voltage: 240-220V~, 50Hz.



Coffee Machine 87-3750

- Water level indicator.
- Automatic shut off.
- Anti-limescale filter.
- Voltage: 220-240V~, 50Hz.



— COFFEE GRINDERS



Coffee Grinder

210-08210[®]

- Stainless steel grinding blade.
- Stainless steel housing.
- AC full copper motor.
- Safety lock system.
- Power cord length 1M.
- 240-220V, 200 60/50W.



200W



Stainless Steel Housing



50g



Coffee Grinder

210-08220[®]

- Stainless steel blade.
- AC full copper motor.
- Safety lock system.
- Power cord storage.
- Detachable cup design: dry cup + wet cup
- 240-220V, 60/50Hz 300 W.



300W



Stainless Steel Housing



100g



**EASY &
PRECISE**



— BLENDERS



Glass Blender with grinder

87-3120[®]

- Glass blending jug.
- Stainless steel blade.
- Speed settings with pulse function.
- Variable speed.
- Voltage: 200-240V~, 50/60Hz.



Glass Blender with grinder

210-11420[®]

- Pulse button rotary speed.
- Double safety switch.
- 2 Speeds settings with pulse function.
- Stainless steel grinder.
- White color.
- Voltage: 230V, 50Hz. 600W.



Glass Blender with grinder

210-11422[®]

- Pulse button rotary speed.
- Double safety switch.
- 2 Speeds settings with pulse function.
- Stainless steel grinder.
- Black color.
- Voltage: 230V, 50Hz. 600W.



— BLENDERS



Plastic Blender with grinder

87-3110[®]

- Stainless steel blade.
- Plastic blending jug.
- Speed settings with pulse function.
- White color.
- Variable speed.
- Voltage: 200-240V~, 50/60Hz.



Table Blender with grinder

210-11322[®]

- Dry grinder.
- 4 Stainless steel blades.
- Black color.
- Easy clean.
- Variable speed.
- 240-220V~60/50Hz, 600W.



Table Blender with grinder

210-11320[®]

- Dry grinder.
- 4 Stainless steel blades.
- White color.
- Easy clean.
- Variable speed.
- 240-220V~60/50Hz, 600W.



— BLENDERS



Plastic Blender with grinder 210-11310®

- High speed.
- Pulse button rotary speed.
- Digital countdown display.
- 2 Preset programs for ice crush.
- 9 Speed settings with pulse function.
- Voltage: 200-240V~,50/60Hz.



Restaurant Blender 87-3210

- High speed.
- Pulse button rotary speed.
- Digital countdown display.
- 2 Preset programs for ice crush.
- 9 Speed settings with pulse function.
- Voltage: 200-240V~,50/60Hz.



King Blender 210-12120

- Variable speeds control with pulse
- Powerful 2000 W
- 6 stainless steel blade
- 2.5 l plastic detachable jug
- Suits all restaurants and coffee shops
- 60/50,~240-220 HZ 2000 W



— BLENDERS



Restaurant Blender 210-12051[®]

- State of the art electronics design.
- 3 One - touch Auto timer.
- Full function, wet & dry application.
- Two in one stainless steel cutting blade.
- Premium quality, virtually unbreakable container.
- 240-220V~60/50Hz, 1200W.



Restaurant Blender 210-12050[®]

- State of the art electronics design.
- 3 One - touch Auto timer.
- Full function, wet & dry application.
- Two in one stainless steel cutting blade.
- Premium quality, virtually unbreakable container.
- 240-220V~60/50Hz, 1200W.



King Blender 87-3230

- Speed settings.
- Rotary speed.
- 2 Preset programs for ice crush.
- High speed.
- Pulse function.
- Voltage: 230V, 50Hz.



— JUICERS



Citrus Juicer

87-3510[®]

- High quality stainless steel housing.
- Attractive window.
- Alternating rotation juice cone.
- Fixed strainer.
- Easy for use.
- Voltage: 230V~, 50Hz.

40W 2 Direction 1.2 Liter



Citrus Juicer

210-06120[®]

- High quality stainless steel body.
- Alternating rotation juice cone.
- Fixed strainer.
- Easy for use.
- 240-220V~60/50Hz.

40W 2 Direction 1.2 Liter



Twin juicer

210-06150[®]

- Plastic knife.
- Cord storage.
- Two cones.
- Power: 90W.
- 500ml juice cup.
- 240-220v -60/50Hz 90W.

90W 2 cones 500ml



FRESH & **Healthy**



— JUICE EXTRACTORS



Slow Juicer

87-3540

- Slow juicer for high efficiency.
- Fixed strainer.
- Cord storage.
- Safety lock.
- Easy for use.
- Voltage 240-220 VAC, 50 Hz



Juice Extractor

87-3530[®]

- Efficient stainless steel blades.
- High quality stainless steel housing.
- Safety switch.
- 2 Variable speeds.
- Easy for use.
- Voltage: 230V~, 50Hz, 850W.



Juice Extractor

210-06360[®]

- Plastic housing.
- 1.5L Pulp container.
- Stainless steel blade and filter.
- The juice outlet can be rotated at any angle.
- Pulse function.
- Voltage: 240-220 VAC, 50Hz, 900 -600W.



MAXIMUM NUTRIENT **RICH EXTRACTION**



— WATER KETTLES



Glass Kettle

210-01521[®]

- Water level indicator.
- Automatic shut off.
- Anti-limescale filter.
- Easy for use.
- Voltage: 220-240V~, 50Hz.



Glass Kettle

210-01520[®]

- Water level indicator.
- Automatic shut off.
- Anti-limescale filter.
- Easy for use.
- Voltage: 220-240V~, 50Hz.



Glass Kettle

87-2020[®]

- Water level indicator.
- Automatic shut off.
- Anti-limescale filter.
- Easy for use.
- Voltage: 220-240V~, 50Hz.



— WATER KETTLES



Stainless Kettle

87-2010

- Automatic shut off.
- Anti-limescale filter.
- Easy for use.
- Voltage: 220-240V~, 50Hz.



Stainless Kettle

210-01220

- Water level indicator.
- Automatic shut off.
- Anti-limescale filter.
- Easy for use.
- Voltage: 220-240V~, 50Hz.



EASY TO USE
**WATER
KETTLE**



— WATER KETTLES



Plastic Kettle

210-01020[®]

- Capacity: 1.8 liter.
- Power 1500W.
- P.P. Plasic
- Water Gauge on the body.
- Dry Boil and Auto off after boiled.
- Voltage: 220 V, 50 Hz.



Plastic Kettle

210-01232[®]

- Capacity: 1.8 liter.
- Power 1500W.
- P.P. Plasic
- Water Gauge on the body.
- Dry Boil and Auto off after boiled.
- Voltage: 220 V, 50 Hz.



Plastic Kettle

210-01010[®]

- Water level indicator.
- Automatic shut off.
- Anti-limescale filter.
- Easy for use.
- Voltage: 220-240V~, 50Hz.



— WATER KETTLES



Plastic Kettle

210-01011[®]

- Water level indicator.
- Automatic shut off.
- Anti-limescale filter.
- Easy for use.
- Voltage: 220-240V~, 50Hz.



Stylish & Quiet



— WATER KETTLES



Glass Kettle

210-01530[®]

- automatic cover open.
- stainless steel housing.
- boiling dry protection.
- 7 levels temperature setting
40,50,60,70,80,90,100d.
- different temperature working with different LED light color.
- 240~220V,60/50Hz, 2200W



2200W



360°

Base



1.7 Liter



Stainless Kettle

210-01250[®]

- Anti grease filter.
- With infrared heating element.
- With strong anti-pressure crystallite glass plate.
- Heating fast and efficiently.
- Auto-thermostat, temperature control.
- 230V 60/50Hz 2200W.



2200W



360°

Base



1.7 Liter



Sometimes
all you need is
a Good cup of **tea!**



— WATER KETTLES



Crystal Kettle

210-01231[®]

- Boiling dry protection.
- Automatically shut off.
- Durable and stain resistant.
- Special color.
- Creystal cap.
- V:220-240v, f:50Hz, P:1800W.



1800W



S.S



1.8 Liter



Crystal Kettle

210-01234[®]

- Boiling dry protection.
- Automatically shut off.
- Durable and stain resistant.
- Special color.
- Creystal cap.
- V:220-240v, f:50Hz, P:1800W.



1800W



S.S



1.8 Liter



Crystal Kettle

210-01233[®]

- Boiling dry protection.
- Automatically shut off.
- Durable and stain resistant.
- Special color.
- Creystal cap.
- V:220-240v, f:50Hz, P:1800W.



1800W



S.S



1.8 Liter



— WATER DISPENSERS



Water Dispenser 225-50261[®]

- With cabinet.
- POU directly.
- Hot, normal and cold water.
- Cooling Method: compressor.
- Child safety lock for hot water faucet.
- Double safety device for preventing overheat.
- SUS304 stainless steel water tank.



Water Dispenser 225-50211[®]

- POU directly.
- Hot, normal and cold water.
- Cooling Method: compressor.
- Child safety lock for hot water faucet.
- Double safety device for preventing overheat.
- SUS304 stainless steel water tank.



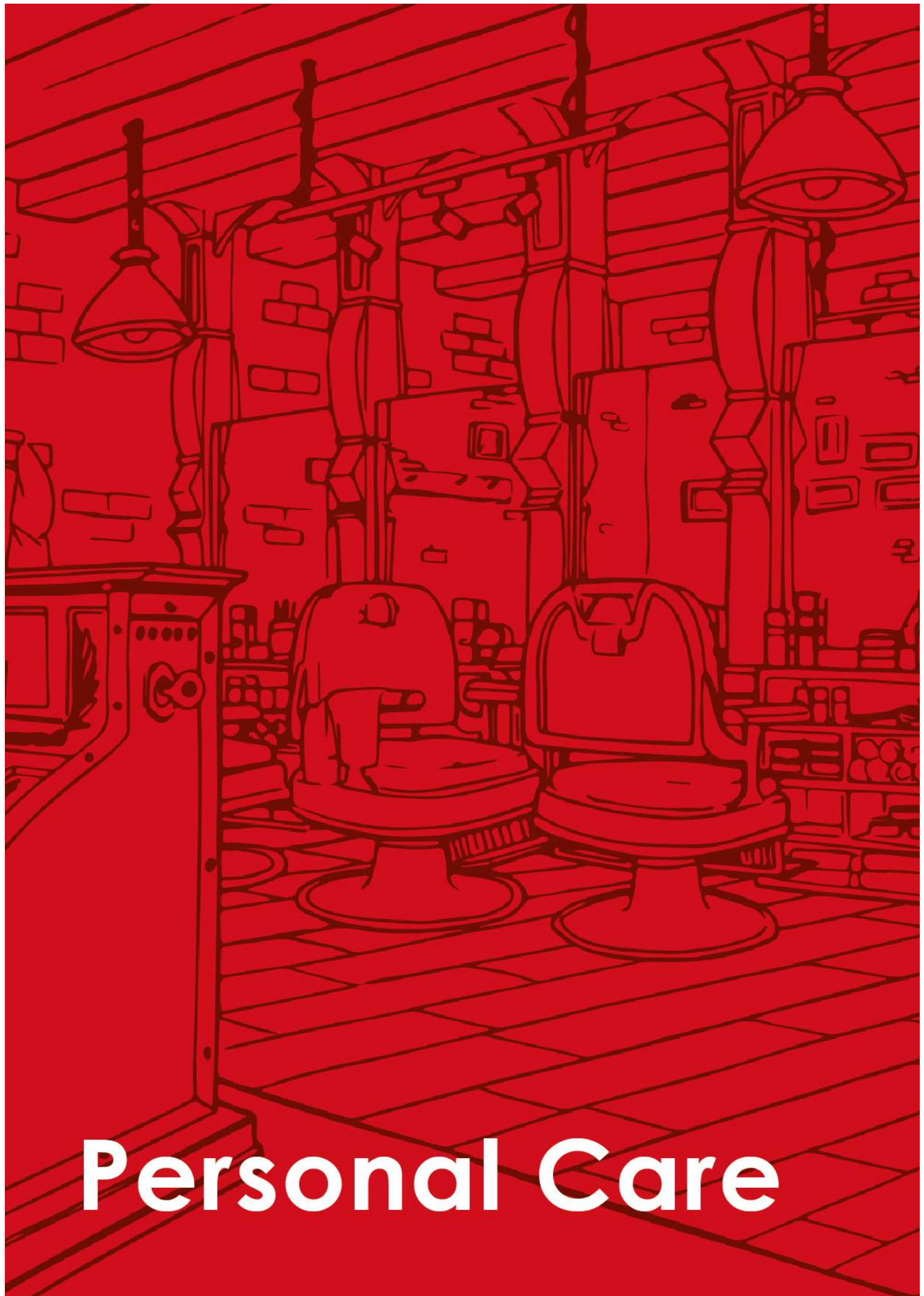
Water Dispenser 225-50150[®]

- Top loading bottle.
- Hot water capacity: 5L.
- Cold water capacity: 2L.
- Double safety device for preventing overheat.
- SUS304 stainless steel water tank.
- High efficiency compressor cooling.
- Fast flow water dispensing.



More Water, More **Happiness**





Personal Care

— WEIGHT SCALE



Body Weight Scale

255-05150

- High precision strain gauge sensors system.
- Capacity: 180KG (Unit: kg,lb,st).
- Four different backlight reveals
- Auto on / Auto zero - Auto off.
- Low battery indication.
- Over load indication.



INTELLIGENT WEIGHT MANAGEMENT



— HAIR STYLERS



Hair Curler

245-01630[®]

- 210 Celsius
- Long lasting curls
- Led silk screen
- Temperature controller
- Ceramic coating titanium plates
- 240-220v -60/50Hz 60W



Hot Air Brush

245-01710[®]

- 3 heat settings .
- Oval brush design.
- Ergonomic handle.
- Mixed bristles with nylon pin for easy detangle.
- 240-220v -60/50Hz 1000W.



Hair Dryer

245-01550

- ON and OFF switch.
- PTC quick heat.
- Ceramic plates.
- 360 swivel cord.



— HAIR STYLERS



Hair Straightener

87-2830

- Temperature controllability.
- On & off switch with power.
- Up, 360° swivel cord.
- Voltage: 220V~ 50HZ.



35W



PTC



Ceramic



Hair Straightener

245-01560[®]

- led silk screen to show real-time temperature.
- Temperature controller.
- 210 Celsius.
- Rapid heating.
- 240-220v -60/50Hz 65W



65W



PTC



Ceramic



STRAIGHTEN IT.
STYLE IT. MAKE IT SMOOTH.

— HAIR STYLERS



Hair Dryer

87-2720*

- AC Motor.
- Two nozzle.
- 3 Heats settings.
- Heat control.
- Voltage: 220V-240V~, 60/50Hz.



Hair Dryer

87-2730*

- AC Motor.
- Two nozzle.
- 3 Heats settings.
- Led display for the temperature.
- Voltage: 220V-240V~, 60/50Hz.



**LIGHTWEIGHT &
EASY TO HANDLE.**



— HAIR STYLERS



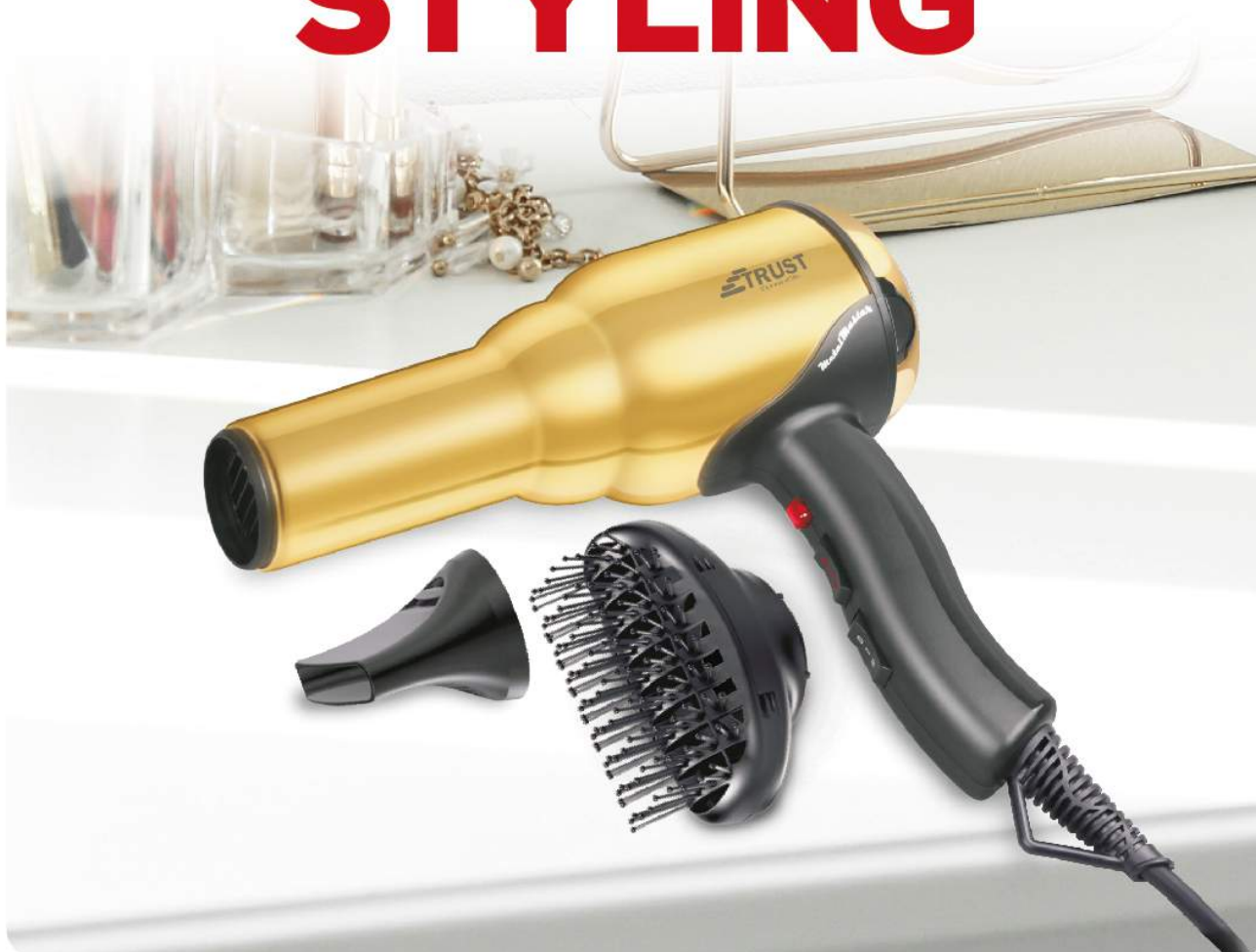
Hair Dryer

245-01130

- Metal housing.
- Keratin therapy.
- One click- cooling.
- Metal filter.
- AC MOTOR.
- 240~220V,60/50Hz, 2400W.



PROFESSIONAL STYLING





Home Care

— STEAM IRONS



Steam Iron

87-2520

- Drip-stop function.
- Spray function.
- Thermostat.
- Light Indicator.
- 360° Swivel power cord end.
- Voltage: 240-220V~, 60/50Hz.



1200W



Powerful
Steam



Teflon
Soleplate



Steam Iron

215-10520[®]

- Anti drip.
- Anti calcification.
- Cord length visible 19m.
- Burst of steam / Spray / Self clean function.
- Continuous adjustable steam & dry function.
- Voltage: 240-220V 60-50HZ 2400-2000W.



2400W



Anti Drip



Ceramic
Soleplate

A STRAGGLE BECOMES

EASY



— STEAM IRONS



Garment Steamer Stand

87-2630

- Rotatable ironing board bionic design.
- Provides better fabric setting effects.
- Meets demands for ironing or steaming.
- Voltage: 240-220V, 60/50Hz..



2200W



Powerful
Steam



Ready in
60 sec



Garment Steamer Stand

215-06530

- Water tank capacity is 1.75L.
- Steam duration 60 minutes.
- Accessories: fabric brush, glove.
- Voltage: 240-220V~60/50Hz, 1500W.



1500W



Powerful
Steam



Ready in
45 sec



Hand Steam Iron

215-11120

- ON/OFF switch.
- With brush accessories.
- Capacity:270ML.
- Product size (LWH):282*125*148mm.
- Detachable tank with front filling door.
- Voltage:240-220V~ 60-50HZ 1630-1370W.



1630W



1.9M



270ml

— STEAM IRONS



Hand Steam Iron

210-01521[®]

- 2 modes for Ironing & steaming.
- Automatic safety mode.
- 150 ml water.
- Straightens wrinkles on clothing.
- Voltage: 240-220V~, 60/50Hz.



1300W



Powerful
Steam



Ready in
8 min



Hand Steam Iron

87-2610[®]

- 2 modes for Ironing & steaming.
- Automatic safety mode.
- 150 ml water.
- Straightens wrinkles on clothing.
- Voltage: 240-220V~, 60/50Hz.



1300W



Powerful
Steam



Ready in
8 min



LIGHTWEIGHT
EASY TO HANDLE

— VACUUM CLEANERS



Barrel Vacuum

87-4120

- Dry vacuum cleaner.
- Blowing function.
- Strong power.
- Capacity: 20 Liter.
- Voltage: 220-240V~, 50Hz.



2000W



20 Liter



High Quality



Barrel Vacuum

215-04320

- 25 Liter tank capacity.
- 7M Cable length.
- Steel brush.
- Steel connect tube.
- Voltage: 240-220V~60/50Hz, 2200W.



2200W



25 Liter



19 KPA



Metal Drum Vacuum

87-4230

- 360° Rotatable Wheels.
- Strong Body, Dust Indicator.
- 25L Tank Capacity.
- Sponge Filter.
- 5 m Cable.
- Voltage: 240-220V, 60/50Hz.



2200W



25 Liter



HIGH EFFICIENCY



Made in
Turkey

— VACUUM CLEANERS



Cyclone vacuum

215-03620

- 2 parts plastic tube.
- Plastic floor brush.
- Flexible hose with air flow on handle.
- Washable dust container faveolate filter.
- Voltage: 240-220V~60/50Hz, 2000W.



2000W



2.5 Liter



S.S



Bag Vacuum

87-4020

- Motor protection.
- 6 M power cord.
- Plastic floor brush.
- Metal telescopic tube.
- 1 Cloth dust bag.
- 240-220V~60/50Hz, 2000W.



2000W



Speed Control



1.5 Liter



Bag Vacuum

215-03310

- Motor protection.
- 6 M power cord.
- Plastic floor brush.
- Metal telescopic tube.
- 1 Cloth dust bag.
- 240-220V~60/50Hz, 2000W.



2000W



Speed Control



1.5 Liter



— VACUUM CLEANERS



Stick Vacuum

215-02710[®]

- Corded 2 in 1.
- Lightweight under 1.5kg.
- 5M cable length.
- Hose, Nozzle.
- Sofa brush.
- Voltage: 240-220V~60/50Hz.



600W



16 KPA



0.8 Liter



Carpet Cleaner

215-07110[®]

- Carpet washing, cleaning and vacuuming.
- Cleaner water tank : 2.1 L.
- Airflow: 16.5 L/S.
- 2.5 upholstery tools.
- The turbo rotary brush clean on carpets.
- Voltage: 220V-240V 60/50HZ , 800 watt.



800W



7.2M



2.1 Liter



Multipurpose Cleaner

215-07115[®]

- 4 Liters

— VACUUM CLEANERS



Rechargeable Vacuum

215-02220

- Real Cyclone system to ensure suction no loss.
- Reliable safety protect.
- Metal filter cover with HEPA inside.
- LED indicator light for charging, discharging and power indicating.
- With wall mounting.
- 22.2V BLDC motor.



Rechargeable Vacuum

215-02210

- Real Cyclone system to ensure suction no loss.
- Reliable safety protect.
- Metal filter cover with HEPA inside.
- LED indicator light for charging, discharging and power indicating.
- With wall mounting.
- 22.2V BLDC motor.



POWERFUL
SUCTION FOR
CLEANING





Comfort

— ELECTRICAL HEATERS



Quartz Heater

235-20480

- 6 quartz heating elements (top 2 tubes + front 4 tubes)
- Safety tip-over switch.
- 4 heating sets.
- Cool touch cabinet.
- With thermostat.
- Heating area: about (30-20) m2.
- Voltage: 230V~, 50Hz, 2400W.



2400W



4+2 Heaters



Safety



Quartz Heater

235-20620

- 6 quartz heating elements (2 top tubes + 4 front tubes).
- 3 heating sets.
- With fan.
- With safety switch.
- With thermostat control.
- Safety grill.
- Heating area: about (30-20)m2.
- Voltage: 230V~, 50Hz, 2400W.



2400W



4+2 Heaters



Fan



Feel the Warmth
**Anytime &
Anywhere**



— ELECTRICAL HEATERS



Quartz Heater

235-20470

- 5 quartz heating elements. (2 top tubes + 3 front tubes).
- With safety switch.
- 3 heating sets.
- With thermostat control.
- Heating area: about 30-20m2.
- Voltage: 230V~50Hz, 2000W.



Quartz Heater

87-6150[®]

- 3 Heating setting.
- Infrared 2+2 upper & front.
- Heating area: about 20-15m2.
- Safety for flip.
- High efficiency.
- Voltage: 230V~, 50Hz.



Ceramic Heater

235-20110[®]

- 3 Heating setting.
- Ceramic infrared heater.
- Heating area: about 15-12m2.
- Safety for flip.
- High efficiency.
- Voltage: 230V~, 50Hz.



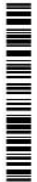
**KEEP YOUR HOME
COZY AND WARM**



— TUBE HEATERS & STANDS

Wall Mounted Heater

235-21150



- Infrared heating technique.
- Suitable for room size up to 35m2.
- Minimal assembly.
- Remote control.
- Voltage 240/220V (50Hz).
- Power settings 3000-1000W.



Carbon Tube Heater

87-6320

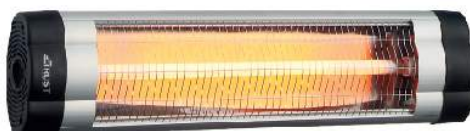


- Carbon infrared heater.
- Remote control.
- Heating area: about 35-25 m2.
- Voltage: 230V~, 50Hz.



Quartz Tube Heater

87-6310



- Quartz infrared heater.
- Heating area: about 35-25 m2.
- Voltage: 230V~, 50Hz.



— TUBE HEATERS & STANDS



Bathroom Heater

235-21050

- 3 quartz tubes element.
- Three heating power :500W/1000W/1500W.
- IP24.
- Voltage: 50,~230Hz,1500W.



Adjustable Tripod Stand

235-21110

- Aluminum adjustable stand.
- Height from 180-110 cm.



Adjustable Tripod Stand

235-21100

- Aluminum adjustable stand.
- Height from 180-110 cm.



— CARBON HEATERS



Carbon Heater

235-22100

- Carbon fiber tube.
- Two power settings.
- With tip over switch.
- With handle.
- Suitable for room size up to 25 m2.
- Auto rotation 45o
- Ip34.
- Voltage: 230V~,50Hz 1200W.



1200W



1 Heaters



Safety



Remote Control



Carbon Heater

235-22110

- Carbon fiber tube.
- Infrared heating technique.
- Suitable for room size up to 35m2.
- Minimal assembly.
- Heavy Base.
- Voltage: 230V~,50Hz 2000 - 1000W



2000W



Remote control



Safety



For a Warm Winter



— CONVECTION HEATER

Convection Heater

235-31120



- Rotary power switch.
- Safety thermal cutout.
- With indicator light.
- With carry handles.
- Freestanding.
- Suitable for room size up to 25m².
- 3 Speeding sets.
- Voltage: 230V~, 50Hz, 2000W.



2000W



Terbo Fan



Safety

Sleek & Modern Design



— ELECTERIC HEATERS



Fire Place Heater

235-24120

- Produces the effect of a hot current of air.
- Temperature control.
- Suitable for room size up to 25m2.
- Voltage: 230V~, 50Hz.



Fire Place Heater

235-24110

- Produces the effect of a hot current of air.
- Temperature control.
- Heating area: about 35-25 m2.
- Voltage: 230V~, 50Hz.



Stylish Heating



— WATER HEATERS



Gas Water Heater

87-7100[®]

- Flame out protection.
- Water regulating device.
- Anti-freezing device.
- Over pressure protection.
- Water volume regulator.
- Water gas leakage safety device.



Gas Water Heater

87-7150[®]

- Flame out protection.
- Water regulating device.
- Anti-freezing device.
- Over pressure protection.
- Water volume regulator.
- Water gas leakage safety device.





FOR BATHS THAT
WARM UP
 YOUR MORNING

— GAS HEATERS



Stand Gas Heater

230-32115

- Heat output max 12 kW.
- 304 black stainless steel burner.
- Height 2210 mm.
- Reflector diameter 810 mm
- 4-pc aluminum reflector.



Stand Gas Heater

230-32110

- Heat output max 12 kW.
- 304 black stainless steel burner.
- Height 2210 mm.
- Reflector diameter 810 mm.
- 4-pc aluminum reflector.



Gas Heater

230-31010

- Heating capacity - 1.76 kW.
- CO2 3 Power settings.
- Ignition-Piezoelectric 123.



— GAS HEATERS



Gas Heater

87-8120®

- Iron base board 2 kg.
- ODS anti tilt safety device.
- Piezo electric ignition mode.
- 0.5 mm & 0.8 mm.
- 2 Front wheels.



Gas & Electrical Heater

230-31120

- Radiant heating system.
- High thermal efficiency.
- Oxygen depletion system.
- Flame failure device.
- Gas type LPG gas.



— BLANKETS HEATERS

Single Blanket Heater

235-50110®

- Size: 80 x 160 cm, 60W.
- 3 Heat settings.
- Overheating protection.
- Detachable controllers, 100% polyester.
- Led indicator on/off.



Double Blanket Heater

235-50210®

- Size: 140 x 160 cm, 2x60W.
- 3 Heat settings.
- Overheating protection.
- Detachable controllers, 100% polyester.
- Led indicator on/off.



— BLANKETS HEATERS

Single Blanket Heater With Timer 235-50120®

- 100% pure polyester.
- Single model for two person use.
- Size: 80*160 cm.
- Power: 60W.
- Over heating protection system.
- Led-100d controller, 1-5 5 temperature settings, 1-10 hours timer function.
- 230v~, 50Hz.



Double Blanket Heater With Timer 235-50220®

- 100% pure polyester.
- Double model for two person use.
- Size: 160*140 cm.
- Power: 2*60W .
- Over heating protection system.
- Led-100d controller, 1-5 5 temperature settings, 1-10 hours timer function.
- 230v~, 50Hz.



— ELECTRICAL FANS



Grand Plus Fan

235-02230*

- 100% Copper Motor with fuse.
- 3 speeds with oscillation.
- 18 inch.
- Round base with heavy.
- Base: Round base with heavy.
- Voltage: 240-220V, 50Hz.



Grand Fan

235-02220*

- 5 Yellow plastic blades.
- 18 inch.
- 3 speeds control.
- Heavy base.
- Voltage: 220V~, 50Hz.



Verona Fan

235-02310*

- 100% Copper Motor with fuse.
- 3 speeds with oscillation.
- Height: 1.4-1.35m.
- Rotary Switch.
- Voltage: 240-220V, 50Hz.



COOL & REFRESHING



3in1



— ELECTRICAL FANS



White Nova Fan

235-02130[®]

- 100% Copper Motor.
- 16 inch.
- 3 speeds with oscillation.
- Blade: 3 Plastic blades.
- Round base.
- Voltage: 240-220V, 50Hz.



Black Nova Fan

235-02110[®]

- 3 White blades.
- Adjustable speed settings.
- 16 inch.
- Adjustable height.
- Super silent.
- Voltage: 220V~, 50Hz.



Parrot Fan

235-02510[®]

- 3 White blades.
- Adjustable speed settings.
- 16 inch.
- Adjustable height.
- Super silent.
- Voltage: 220V~, 50Hz.



— ELECTRICAL FANS



Copra Fan

235-02620[®]

- 100% Copper Motor.
- 20 inch
- PP housing.
- Horizontal oscillations per Criquet 130°C.
- Motor Temperature Automatic Safeguard.
- Voltage: 240-220V, 50Hz/60Hz.



POWERFUL AIRFLOW



— INSECT KILLERS



Insect Killer

215-20340*



- Housing: It is made of ABS material, which is strong, nice and durable.
- High efficiency with 1,200-1,000V.
- High voltage to grab mosquitoes.
- Effective UVA lamp to attract mosquitoes.
- Suspended or free standing.
- 230-220V 50Hz ~ 15*2W.



SCAN TO
WATCH VIDEO



Insect Killer

215-20230*



- Housing: It is made of ABS material, which is strong, nice and durable.
- High efficiency with 1,200-1,000V.
- High voltage to grab mosquitoes.
- Effective UVA lamp to attract mosquitoes.
- Ceiling suspended or free standing.
- 230-220V 50Hz ~ 2X10W.



SCAN TO
WATCH VIDEO



Insect Killer

215-20210*



- Housing: It is made of ABS material, which is strong, nice and durable.
- High efficiency with 1,200-1,000V.
- High voltage to grab mosquitoes.
- Effective UVA lamp to attract mosquitoes.
- Ceiling suspended or free standing.
- 230-220V 50Hz ~ 2X6W.



SCAN TO
WATCH VIDEO



Insect Killer

215-20110*



- Housing: It is made of ABS material, which is strong, nice and durable.
- High efficiency with 1,200-1,000V.
- High voltage to grab mosquitoes.
- Effective UVA lamp to attract mosquitoes.
- Ceiling suspended or free standing.
- 240-220V 60/50Hz ~ 6W.



SCAN TO
WATCH VIDEO



Contact us

Factory Address:
P.O.Box 258 Al-Rameh Suburb
Hebron, Palestine P7190117

Mailing Address:
P.O.Box 51841
Jerusalem, IL 9711025

Tel: +970 2 22 19 800
Fax: +970 2 22 20 127
IL Tel: +972 73 381 6560

info@royal.ps
www.royal.ps



CUSTOMER SERVICE
1700 900 300

